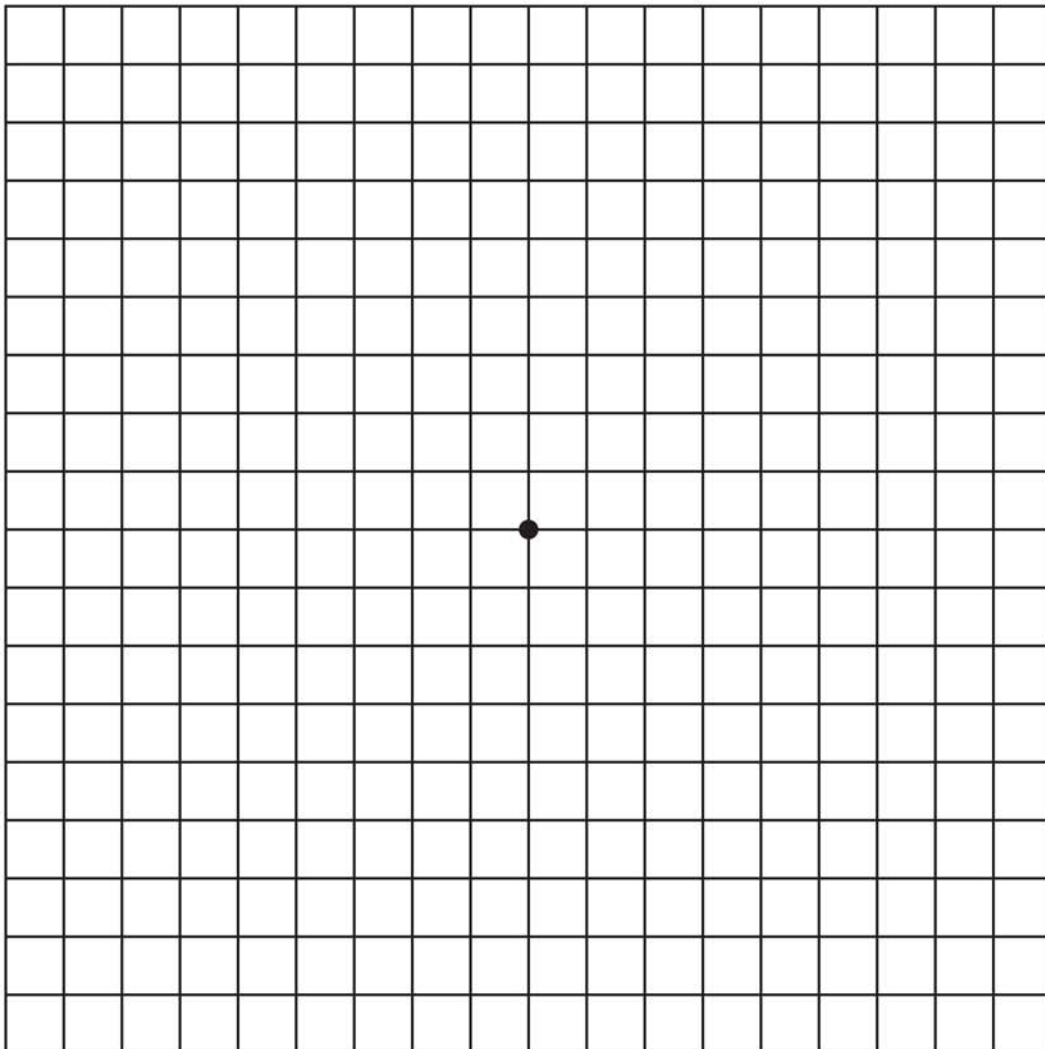


Place this Amsler grid in a location in your home where you can check it regularly.

The grid should appear to have straight horizontal and vertical lines with a dot in the center. This grid should not appear wavy or blurry. When doing this test, keep the following in mind:

- It is important to test each eye separately. So cover 1 eye and look at the grid with the other. Then repeat with your other eye
- Keep the grid at a normal reading distance—about 14 inches away
- Do not stare at the grid for long periods of time
- Make sure you are looking directly at the dot in the center of the grid
- If you normally wear glasses, do so while looking at the grid
- Make sure you are looking at the grid with adequate lighting



Who is LUCENTIS for?

LUCENTIS[®] (ranibizumab injection) is a prescription medicine for the treatment of patients with wet age-related macular degeneration (AMD).

What important safety information should I know about LUCENTIS?

Like any prescription medication, **LUCENTIS** is not for everyone. You should not use **LUCENTIS** if you have an infection in or around the eye.

Like other injections given into the eye, serious eye infection (endophthalmitis) and detached retina have occurred with **LUCENTIS**. Increases in eye pressure have been seen within 1 hour of an injection. Your eye doctor should monitor your eye pressure and eye health during the week after the injection.

If your eye becomes red, sensitive to light, painful, or has a change in vision, you should seek immediate care from your eye doctor.

Although uncommon, conditions associated with eye- and non-eye-related blood clots (arterial thromboembolic events) may occur.

Serious side effects related to the injection procedure were rare. These included serious eye infection, detached retina, and cataract. Other uncommon serious side effects included inflammation inside the eye and increased eye pressure.

The most common eye-related side effects were red eye, eye pain, small specks in vision, the feeling that something is in your eye, and increased tears. The most common non-eye-related side effects were nose and throat infection, headache, and respiratory and urinary tract infections.

LUCENTIS is for prescription use only. Individual results with **LUCENTIS** may vary.